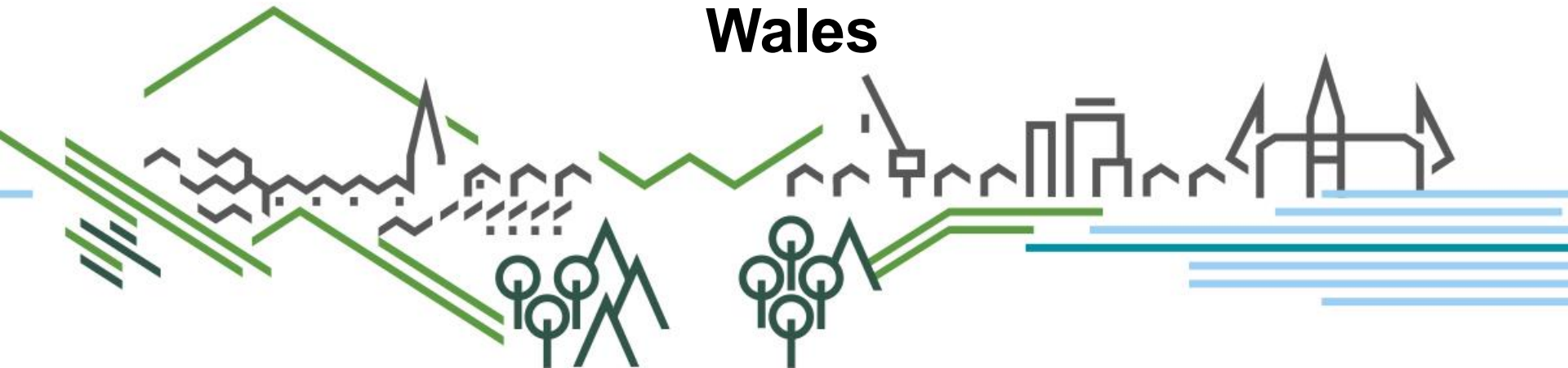


# **Cipolwg o Gymru**

# **Welsh Perspective**

**Lisa Tomos**

**Cyfoeth Naturiol Cymru / Natural Resources  
Wales**

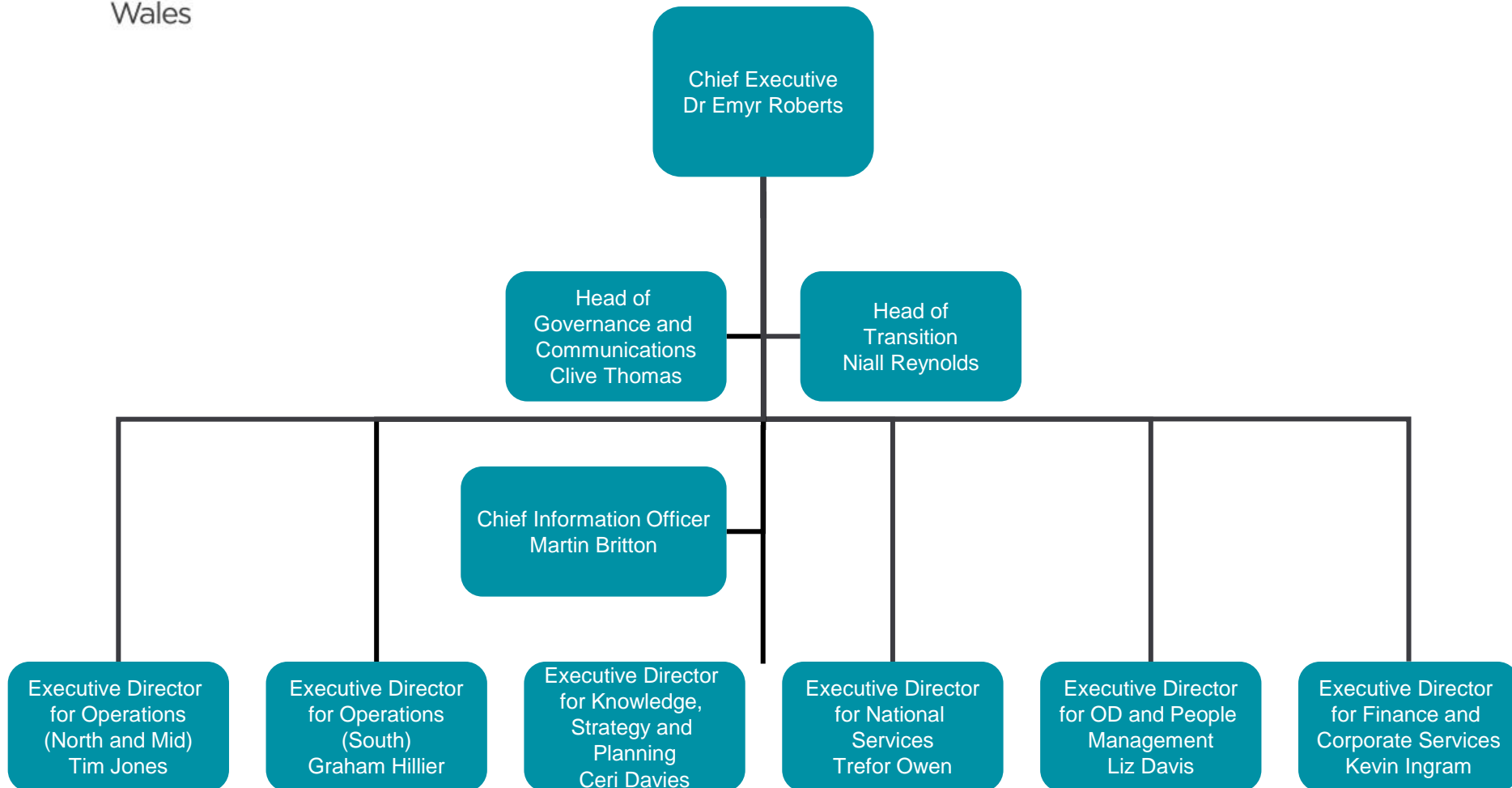


# Our purpose

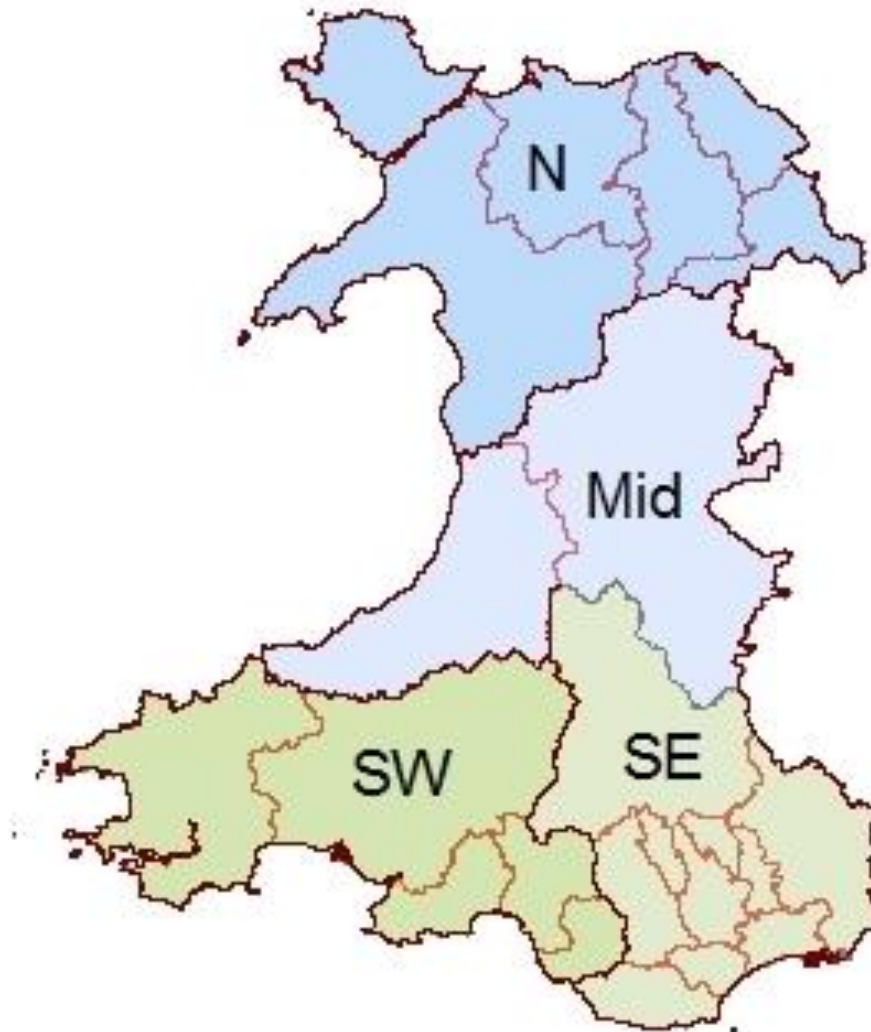
Our purpose is to ensure that Wales's natural resources are sustainably maintained, used and enhanced - now and in the future.



# Who are we?



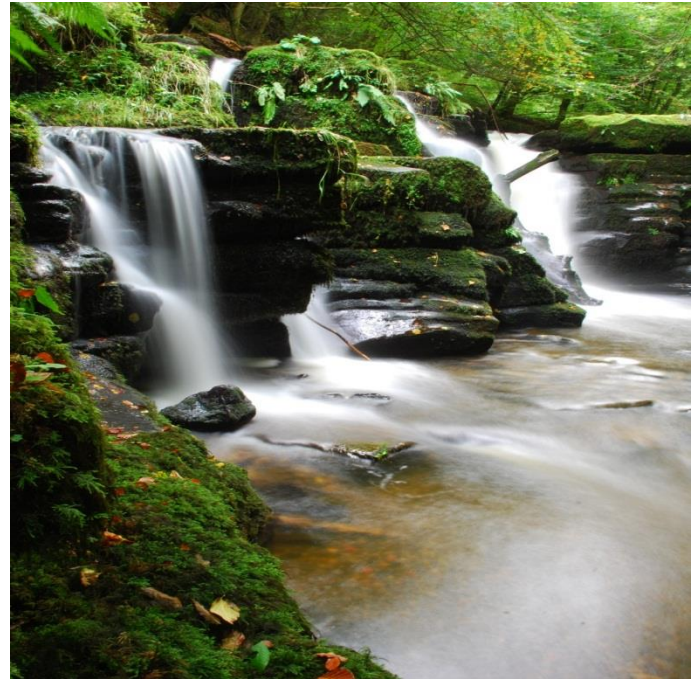
# Our boundaries



# Welsh AONB's

- Gower
- Wye Valley
- Ynys Môn
- Llŷn
- Clwydian Range and Dee Valley

# Designating Authority for SSSIs & AONBs



# NRW Landscape Evidence & Application

- Landmap
- Seascapes
- Regional Character Map
- Advice linking Ecosystem Approach & management planning
- Historic Landscapes
- Recent designation of extension to CR&DV AONB tested methodology
- Landscape position paper being prepared

# Direction

- **Ecosystem Approach**
- **Taking the Long View**
- **Williams Review of Public Services**
- **Review of Designated Landscapes**
- **Marine Plan**
- **WG Shared Outcomes**



# WG Shared Outcomes

- Enhancing our environment
- Protecting people
- Supporting enterprise and jobs
- Improving the nation's health
- Viable and vibrant places
- Delivering social justice
- Supporting skills and knowledge

# WG Review of Designated Landscapes

- Independent Panel
- Merits of a single designation?
- Are the DL's equipped with the right tools for the next 60 years?
  
- Phase 1 reports end January
- Phase 2 from mid February, reports June

# Legislative Programme

- Environment Bill
- Wellbeing of Future Generations Bill
- Positive Planning Bill
- Cultural Heritage Bill

# Environment Bill

- A legal framework for the sustainable management of natural resources.
- The key elements are:
  - State of Natural Resource Report (SoNaRR)
  - National Natural Resource Policy (NNRP)
  - Area-based Approach (ABA) and Area Statements
  - Appropriate use of our regulatory approaches

# Well Being of Future Generations (Wales)

## AIM

Public bodies to  
improve the  
economic, social  
and environmental  
well-being of Wales,



in accordance with the  
“sustainable  
development  
principle”

# Applying SD Principles

Public bodies in setting well-being objectives and taking action to meet those objectives, and thereby contributing to the national Goals, Must:

Consider **long term** needs  
take an **Integrated** approach across economic, social and environmental well-being issues

**Involve** others

Take **Collaborative** action

**Prevent** problems occurring

# Impacts of WG Legislative Programme

- New Local Authorities
- Joint delivery
- Further shared resources
- Further integrated management
- Demonstrate dynamism

# Cysylltwch â ni / How to contact us

- Phone: 0300 065 3000
- E-mail: [enquiries@naturalresourceswales.gov.uk](mailto:enquiries@naturalresourceswales.gov.uk)
- Web: [www.naturalresourceswales.gov.uk](http://www.naturalresourceswales.gov.uk)
- Follow us on Twitter, Facebook, Flickr and Youtube on NatResWales

